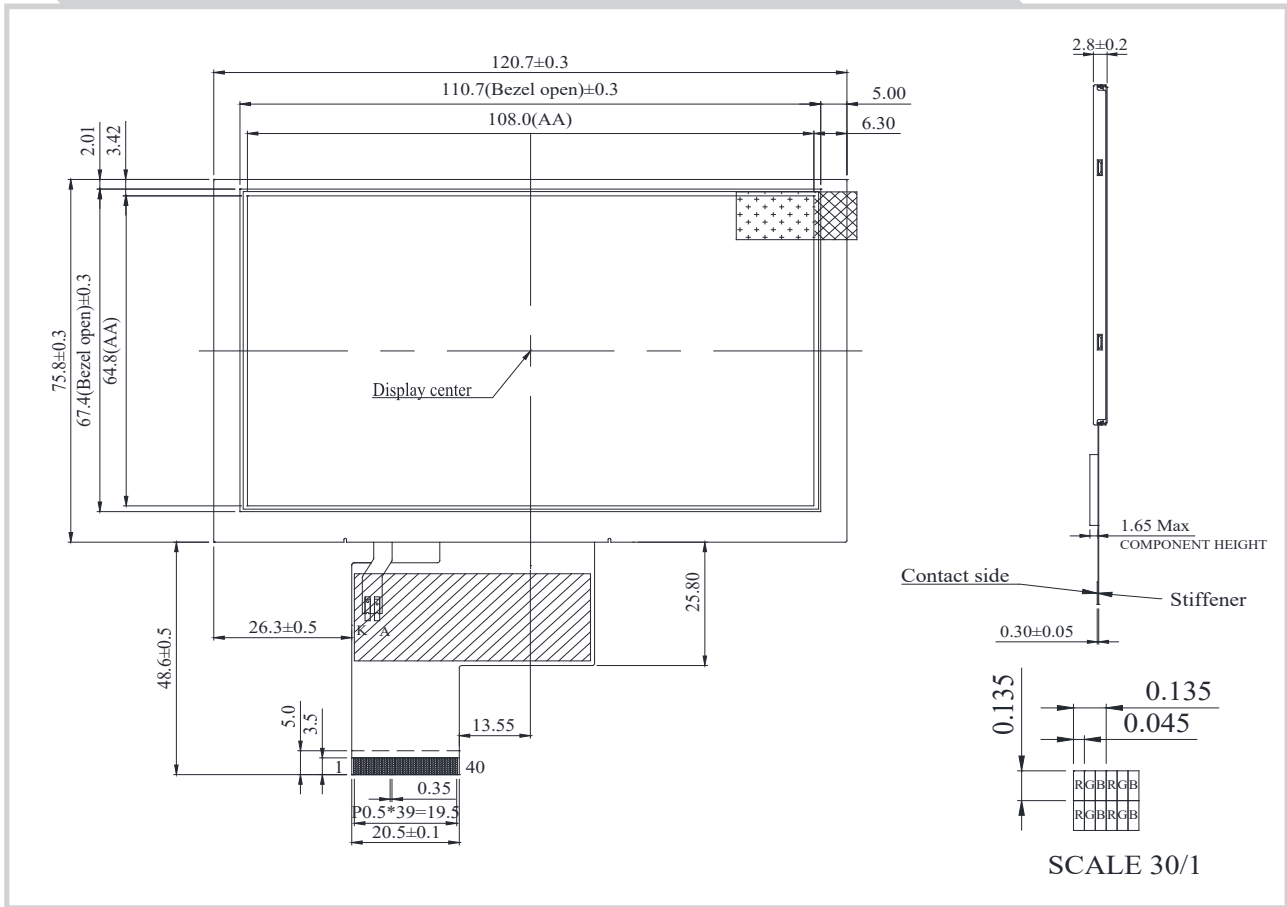


NTF50B TFT Graphic 800x480 dots



Feature

1. 5.0 inches Color TFT
2. Dot Matrix: 800xRGBx480
3. View Direction: 12 o'clock
4. Gray Scale Inversion Direction: 6 o'clock
5. +3.3V power supply of VCC
6. Touch Panel: CTP/RTP option
7. Interface : RGB 888(Only DE)

Pin	Symbol	Function
1	VLED-	Power for LED backlight (Cathode)
2	VLED+	Power for LED backlight (Anode)
3	GND	Power Ground
4	VDD	Power voltage
5	R0	Red data (LSB)
6~11	R1~6	Red data
12	R7	Red data(MSB)
13	G0	Green data(LSB)
14~19	G1~6	Green data
20	G7	Green data(MSB)
21	B0	Blue data(LSB)
22~27	B1~6	Blue data
28	B7	Blue data(MSB)
29	GND	Power Ground
30	CLK	Sample clock
31	DISP	Display on/off
32	NC	No connection
33	VS	Vertical sync input
34	DE	Data input enable
35	NC	No connection
36	GND	Power Ground
37~40	NC	No connection

Mechanical Data

Item	Standard Value	Unit
Module Dimension	120.7 x 75.8	mm
Viewing Area	110.7 x 67.5	mm
Active Area	108 x 64.8	mm
Dot Pitch	0.045 x 0.135	mm

Electrical Characteristics (Operating conditions)

Item	Symbol	Min	Typ	Max	Unit
Supply Voltage	VDD	3	3.3	3.5	V
Supply Current	I _{dd}	---	110	170	mA

Electrical Characteristics (B/L driving conditions)

Parameter	Symbol	Min	Typ	Max	Unit
LED Voltage	VLED+	18	19.2	20	V
LED Current	I _{LED}	---	60	---	mA